

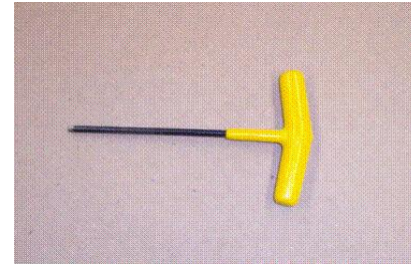
# TwinTite

Operation and Parts Breakdown



Model	Torque	Socket Size
1990	60 in / lbs	5/16"
1992	80 in / lbs	5/16"
1994	80 in / lbs	3/8"

## Tools Needed



5/32" Allen Wrench



Torque Wrench  
(must read inch pound)



5/8" Open End Box Wrench



Allen Socket  
5/16" or 3/8"

Wheeler-Rex • Ashtabula, Ohio  
1-800-321-7950 • [www.wheelerrex.com](http://www.wheelerrex.com)



## Attaching the TwinTite



1. Place wire form (# 701155) around handle of drill.



4. Squeeze wire form to fit snug against drill handle, then tighten screws (2) with 5/32" allen wrench located in wire holder.



2. Put wire form ends through holes in wire holder (# 701154).



5. Place top strap (# 701152), bottom strap (# 701153), and two screws (# 275131) on wire form so that the screws can be tightened from outside the drill handle.

**Note:** The grooves in the straps should face each other to form a circular shape.



3. Place hex stem of TwinTite in drill chuck & tighten.

**Note:** Wire form may need to be bent slightly to fit your make & model of drill.



6. Tighten both screws with 5/32" allen wrench in top & bottom strap; make sure that the wire form is seated in the grooves of the top & bottom strap. Wire form can be cut if it extends past TwinTite body.

Wheeler-Rex • Ashtabula, Ohio  
1-800-321-7950 • [www.wheelerrex.com](http://www.wheelerrex.com)





## Checking Torque Specs

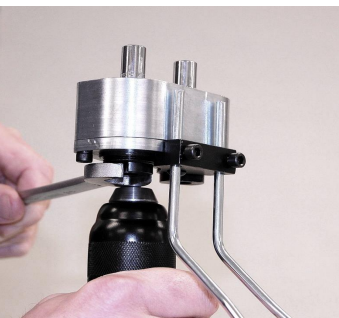


1. Place drill in vise & lightly clamp to hold drill hands free.



2. Hold drill chuck with one hand while using torque wrench with allen socket to see what the current torque limit is.

Model	Torque	Socket Size
1990	60 in / lbs	5/16"
1992	80 in / lbs	5/16"
1994	80 in / lbs	3/8"



3. To increase torque setting: Hold drill chuck while using a 5/8" open end box wrench to tighten adjusting nut (#701145), and repeat step 2.

**Note:** Tighten the adjusting nut slightly; the torque will quickly increase. To decrease torque setting: Hold drill chuck while using a 5/8" open box wrench to loosen Adjusting Nut (#701145), then repeat step # 2.

4. When desired torque has been set, repeat for opposite side.

## Operating the TwinTite

1. Place drill drive direction in reverse to tighten fasteners.
2. Put TwinTite sockets on the no-hub coupling fasteners. One side may slide on before the second will line up. Slowly press trigger on drill allowing the TwinTite to turn and the second socket will then line up.

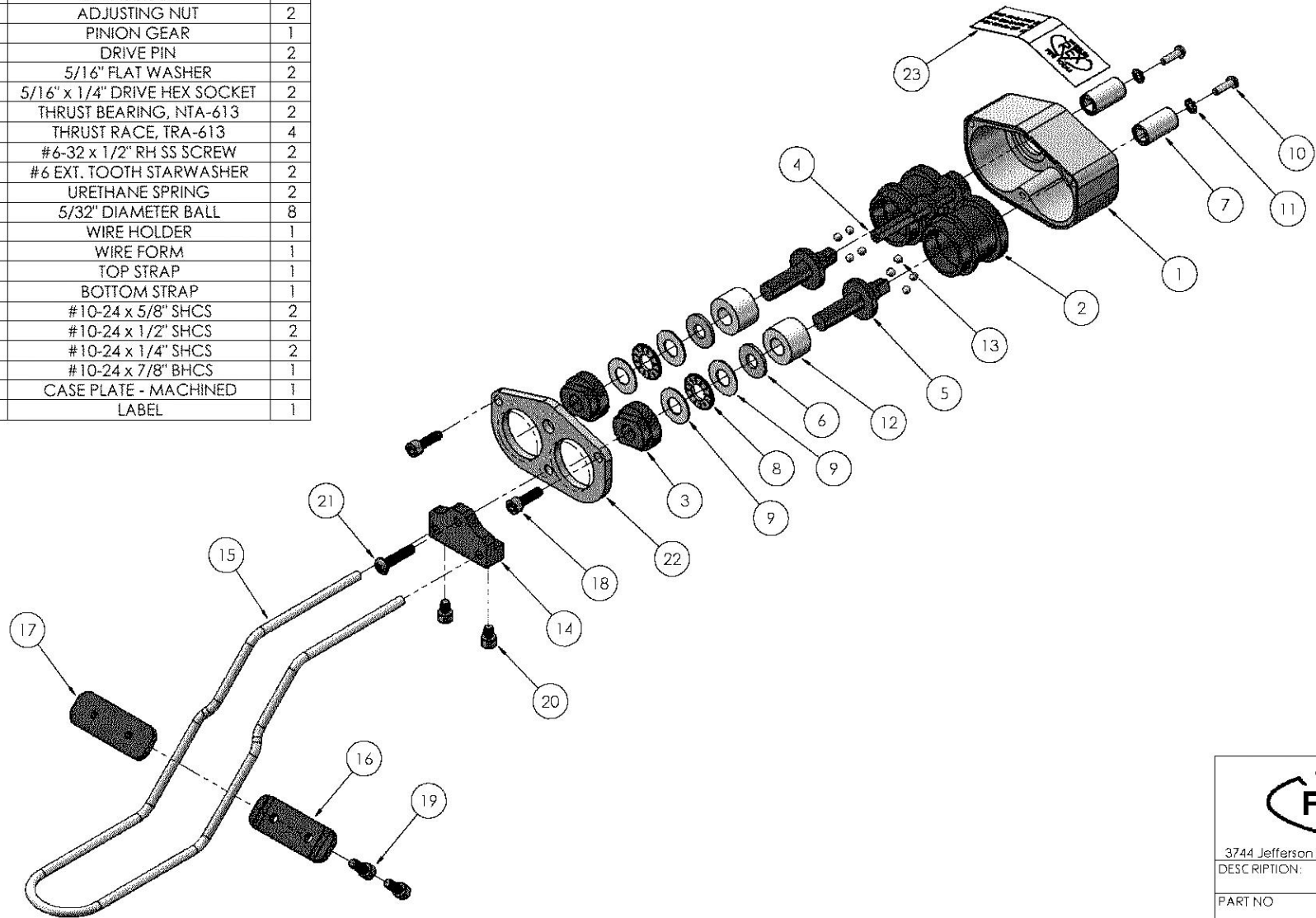


3. Pull trigger to the full on position to tighten both fasteners. When a fastener has met the torque setting a 'clicking' sound will be heard, and the socket will stop moving. Do not stop tightening until the second fastener has reached the torque limit. At this point both sockets will not be rotating, with only a 'clicking' sound being heard.
4. To take couplings off, the drill drive direction will be forward.

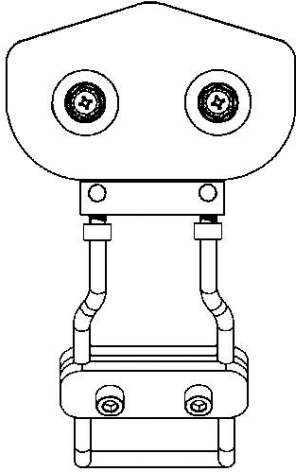
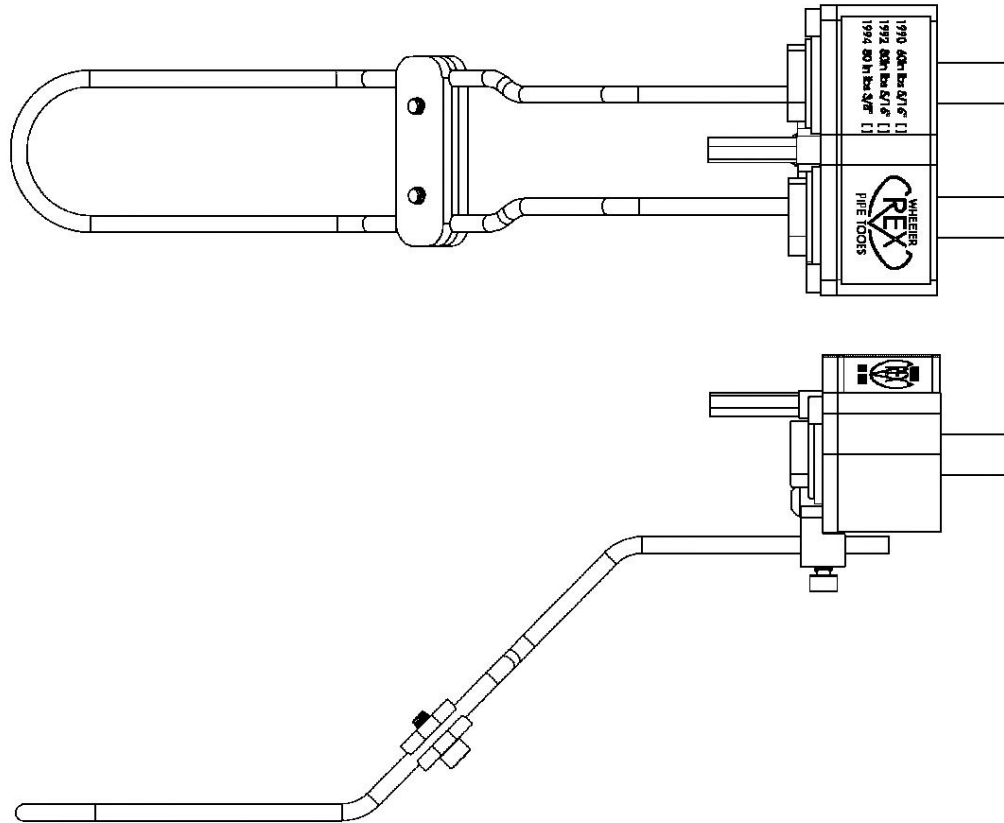
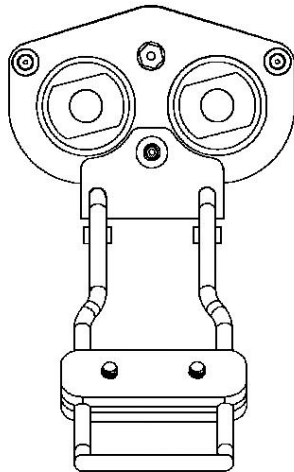
Wheeler-Rex • Ashtabula, Ohio  
1-800-321-7950 • [www.wheelerrex.com](http://www.wheelerrex.com)



ITEM NO.	PART NUMBER	DESCRIPTION	QTY.
1	701139	CASE - MACHINED	1
2	701143	BARREL GEAR	2
3	701145	ADJUSTING NUT	2
4	701144	PINION GEAR	1
5	701146	DRIVE PIN	2
6	275685	5/16" FLAT WASHER	2
7	275410	5/16" x 1/4" DRIVE HEX SOCKET	2
8	275414	THRUST BEARING, NTA-613	2
9	275415	THRUST RACE, TRA-613	4
10	275703	#6-32 x 1/2" RH SS SCREW	2
11	275704	#6 EXT. TOOTH STARWASHER	2
12	701147	URETHANE SPRING	2
13	277028	5/32" DIAMETER BALL	8
14	701154	WIRE HOLDER	1
15	701155	WIRE FORM	1
16	701152	TOP STRAP	1
17	701153	BOTTOM STRAP	1
18	275070	#10-24 x 5/8" SHCS	2
19	275131	#10-24 x 1/2" SHCS	2
20	277029	#10-24 x 1/4" SHCS	2
21	277030	#10-24 x 7/8" BHCS	1
22	701140	CASE PLATE - MACHINED	1
23	277061	LABEL	1



3744 Jefferson Rd. Ashtabula, OH 44005  
 DESCRIPTION: TWIN TITE  
 PART NO: 1990



3744 Jefferson Rd., Ashtabula, OH 44005

DESCRIPTION: TWIN TITE

PART NO. 1990